



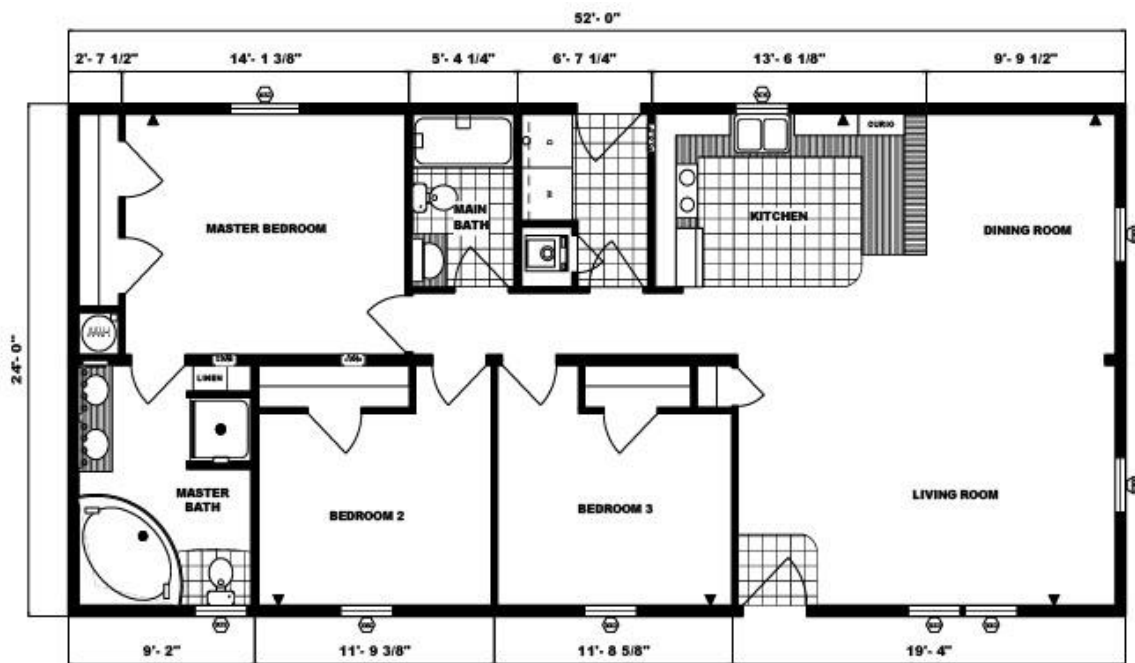
- Property Management
- Community Management
- Manufactured Home Sales



Sample picture only

What are you waiting for? Don't miss this opportunity!! Up to \$8,000 Federal Home Buyer Tax Credit for qualified 1<sup>st</sup> time home buyers on your new/used manufactured housing purchase.

Call us today.



APPLEVILLE – 1510 Jonathon Rd, West Chester

2010 Pine Grove Model # 232

Turn key package

24 X 48 - 3 bedrooms, 2 baths, living room, dining room,  
A/C, gutters, 3/12 pitch roof

1-4x6 & 1-8x10 deck

(washer/dryer and other options not included)

\$89,900.00<sub>approx.</sub>

Visit us at: [WWW.MISACORPORATION.COM](http://WWW.MISACORPORATION.COM)